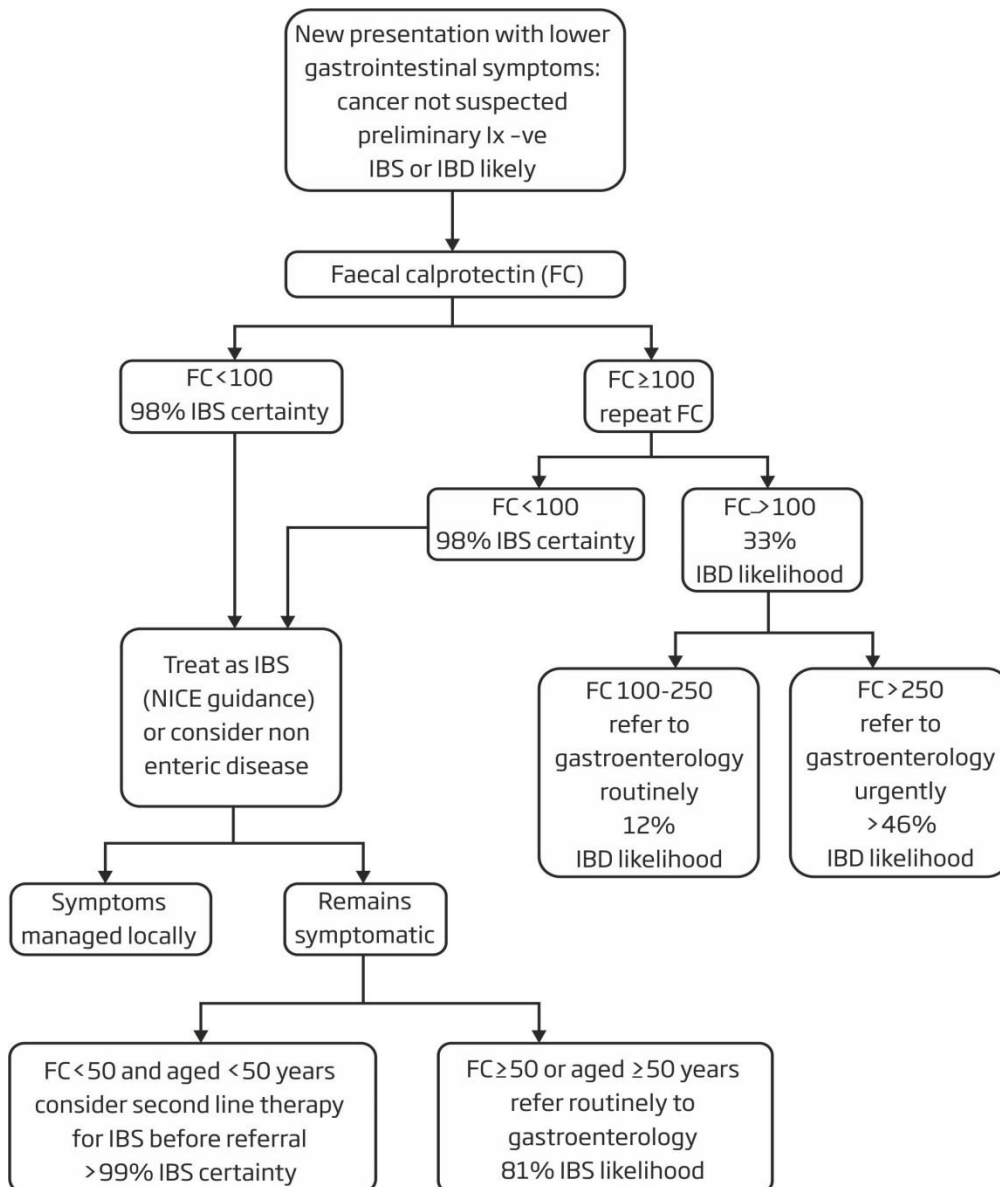


## Updated Faecal Calprotectin Pathway for Primary Care



### Exclusion criteria:

Cancer suspected (NICE guideline NG12. <https://www.nice.org.uk/guidance/ng12>)

### Inclusion criteria:

- Adult 18-60 years
- New lower gastrointestinal symptoms
- Normal or negative initial workup (FBC, U&E, Cr, TFT,CRP, Ca, coeliac screen)  
Stool culture / *C. difficile* screen as appropriate.